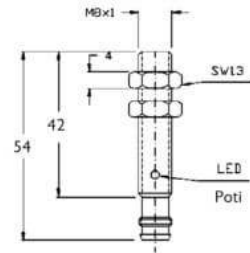


Capacitive Proximity Sensors (DC)

# CBLD0815

## M8 (PNP NC)



Connection:	plug M8, 3-pin
Connection type:	plug M8
Outlet:	PNP NC
Design:	M8
Diameter:	M8x1
Installation type:	flush
Short protection:	yes
Length:	54 mm
LED:	yes
No-load current:	10 mA
Nominal voltage:	24 VDC
Switching distance:	1,5 mm
Switching frequency:	100 Hz
Protection class:	IP 65
Voltage drop:	2 V
Voltage type:	VDC
Voltage range:	10 - 30 V
Ampacity:	50 mA
Environment temperature:	-10 bis 70 °C
Material:	steel

Further information about this product can be found on our website, please visit:

[https://schoenbuch-sensor.de/en/products/cbld0814\\_en/cbld0815\\_en/](https://schoenbuch-sensor.de/en/products/cbld0814_en/cbld0815_en/)