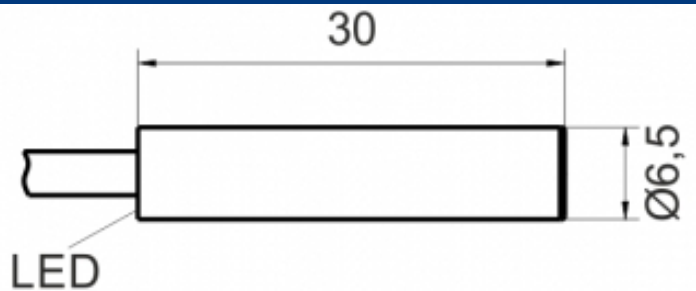
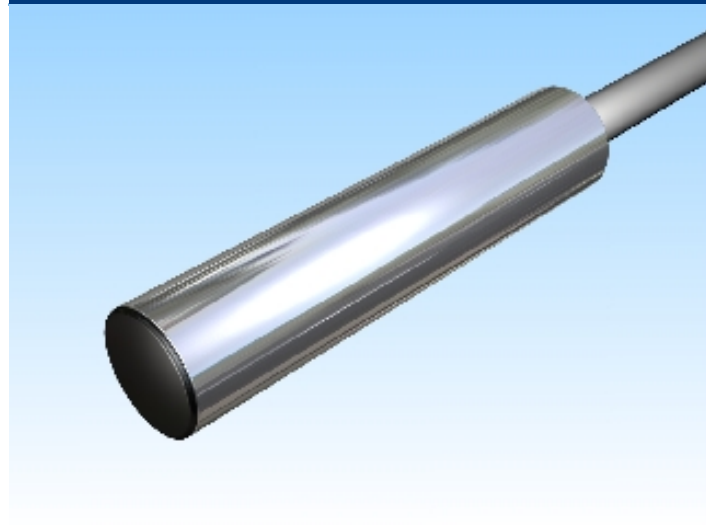


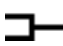


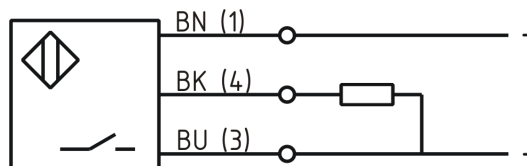
[Article Page](#)

Product Description **inductive sensor DC**



Name	KJ2-G6,5MB30-DPS
Order number	08317816000
Matchcode	9981-6000
Switching distance	2 mm
Mounting	 shielded
Switch type	 N.O.
Signal Type	DC PNP
Connection	 Cable

Connection diagramm



Dimension (in mm)	D 6.5 x 30
-------------------	------------

Technical Specification

Operating voltage	10 - 30 VDC
Max. ripple	≤ 10 %
Voltage drop	2,4 V
Max. load current	200 mA
No load current	≤ 10 mA
Leakage current	≤ 10 µA
Switching frequency	3000
Switching hysteresis	≤ 10 %

Operating temperature	-25 ° C to 75 ° C
Temperature drift	≤ 10 %
Repeat accuracy	≤ 2 %
Swiching state	LED
Short-circuit proof	yes
Overload protection	yes
Reverse voltage protection	yes
Protection category	IP67
EMC-level	DIN EN 60947-5-2: 2008
Housing material	Brass, nickel plated
Cable length	2 m
Utilisation category	DC 13
Cable material	PVC grau LIYY
Cable cross	3x0.14 mm ²

Errors and omissions exceptet