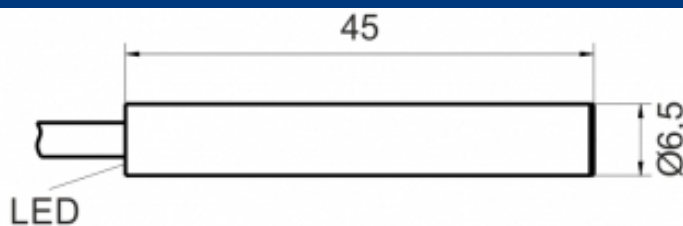
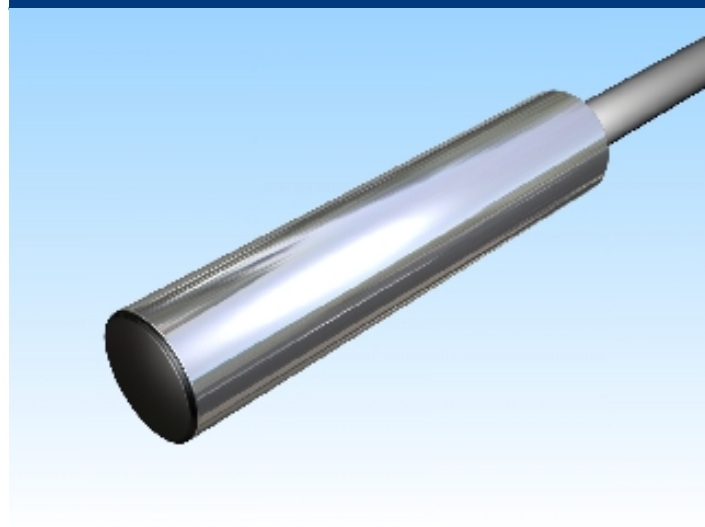


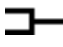


[Article Page](#)

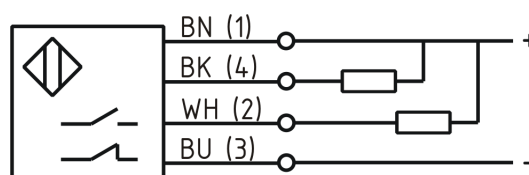
Product Description

inductive sensor DC



Name	SJ1,5-G6,5EB45-DNA
Order number	08313651554
Switching distance	1,5 mm
Mounting	 shielded
Switch type	 Changeover
Signal Type	DC NPN
Connection	 Cable

Connection diagramm



Dimension (in mm)	D 6,5 x 45
-------------------	------------

Technical Specification

Operating voltage	10 - 30 VDC
Max. ripple	≤ 10 %
Voltage drop	2,4 V
Max. load current	200 mA
No load current	≤ 10 mA
Leakage current	≤ 10 µA
Switching frequency	2000
Switching hysteresis	≤ 15 %
Operating temperature	-25 ° C to 75 ° C

Temperature drift	≤ 10 %
Repeat accuracy	≤ 1 %
Swiching state	LED
Short-circuit proof	yes
Overload protection	yes
Reverse voltage protection	yes
Protection category	IP67
EMC-level	DIN EN 60947-5-2: 2008
Housing material	Stainless steel V2A
Material active face	POM
Cable length	2 m
Utilisation category	DC 13
Cable material	PVC grau LIYY
Cable cross	3x0.14 mm ²

Errors and omissions exceptet