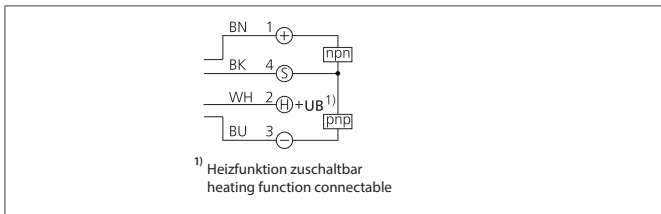


OEVP 50 M 50000 G3LK-IBS/H

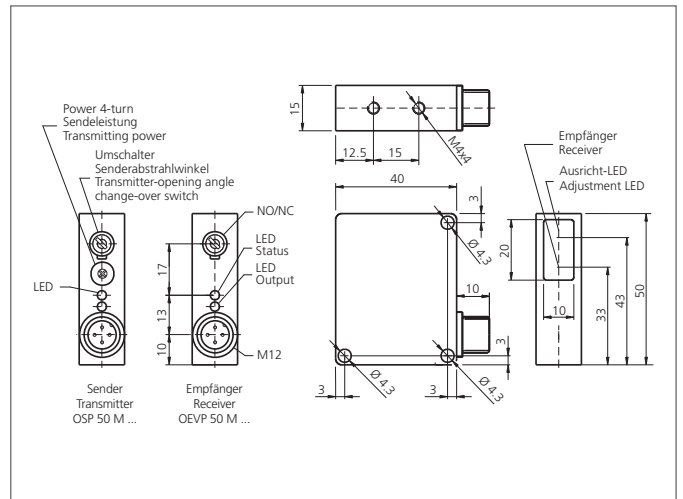
High Performance Photoelectric Sensor, Receiver

- With heating element
- Very high contamination and functional reserve
- Robust metal casing
- Bright alignment aid via LED in receiver optics



Safety instructions

The Instruments are not to be used for safety applications, in particular applications in which safety of persons depends on proper operation of the instruments.
These instruments shall exclusively be used by qualified personnel.



| TECHNICAL INFORMATION (typ.) | | +20°C, 24V DC |
|--------------------------------|--|--|
| Operating principle | | Through beam sensors, receiver, switching output |
| Evaluation | | digital |
| Size | | 50 x 40 x 15 mm (Dimensions) |
| Design | | cuboid design |
| Characteristics | | High transmit power and dirt penetration |
| Service voltage | | 10 ... 35 V DC |
| No-load current | | < 40 mA |
| Operating distance | | 0 ... 50000 mm dependent on the transmitter |
| Sensitivity adjustment | | no setting elements |
| Switching output | | Push pull, 200 mA, NO/NC, switchable |
| Switching hysteresis | | < 12 % |
| Power consumption | | 20 W heat up mode, 7 W with heating |
| Shock-/vibration load | | 10 ... 55 Hz / 1,0 mm / 30 g |
| Switching frequency | | 20 Hz |
| Ambient temperature, operation | | -40 ... +50 °C |
| Ambient light immunity | | 15 kLx, Sunlight, 2 kLx, clocked light |
| Protection class | | IP 67 |
| Protection degree | | III, operation on protective low voltage |
| Casing material | | Die-cast zinc black lacquered finish |
| Connection | | Connector, M12 |