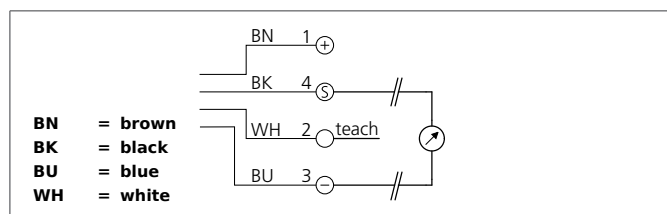


USTI 12 M 200-I-IBSL

Ultrasonic Sensor

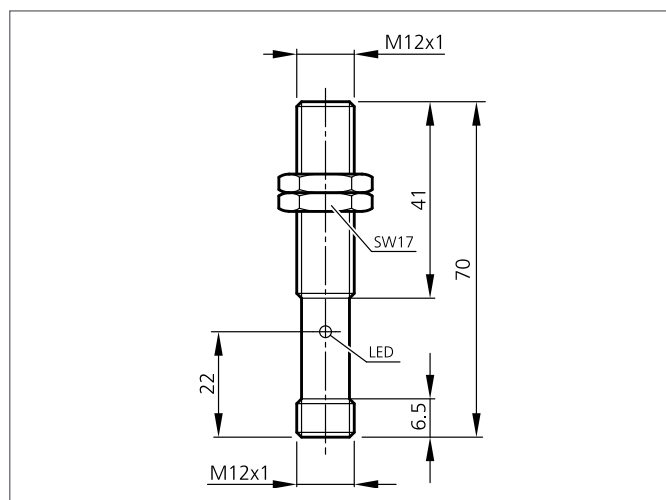


- Narrow detection beam / small blind zone
- Analog output: increasing/decreasing, teachable
- Small design
- Scanning does not depend on surface



Safety instructions

The Instruments are not to be used for safety applications, in particular applications in which safety of persons depends on proper operation of the instruments.
These instruments shall exclusively be used by qualified personnel.



TECHNICAL INFORMATION (typ.)		+20°C, 24V DC
Operating principle		Ultrasonic sensor
Evaluation		analog
Size		M12 x 1 (thread)
Design		screw
Service voltage		15 ... 30 V DC
No-load current		< 30 mA
Operating distance		20 ... 200 mm
Sensitivity adjustment		Remote teach
Analog output		4 ... 20 mA
Sound frequency		400 kHz
Ripple		10 %
Linearity analog output		< 1 % / Sn max.
Shock/vibration load		10 ... 55 Hz / 1,0 mm / 30 g
Switching frequency		13 Hz
Reproducibility		0,5 %
Ambient temperature, operation		-25 ... +70 °C
Load resistance		< 300 Ω
Insulation voltage endurance		500 V
Protection class		IP 65
Casing material		brass nickel plated
Connection		Connector, M12, 4-poled