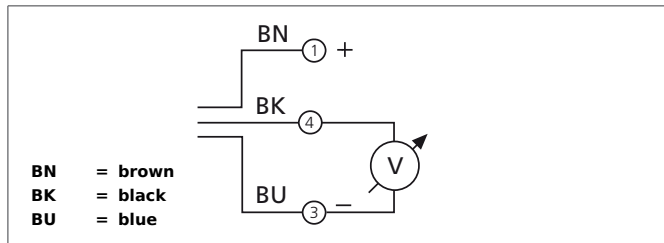


# DCCQ 08 M 04/10 AK-TSL

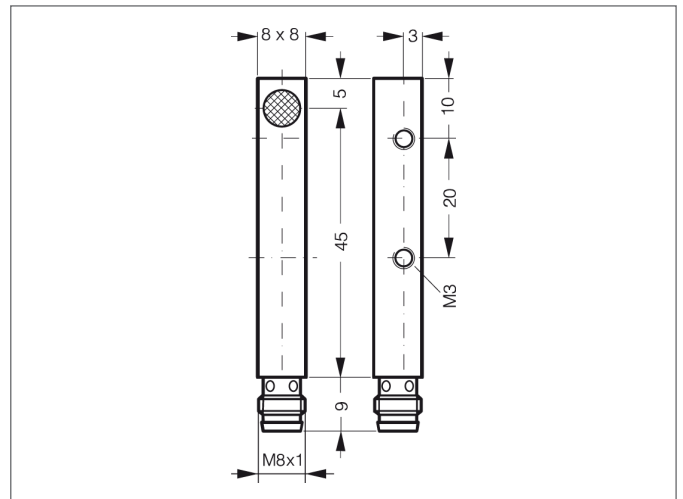
## Inductive Proximity Switch

- Analog voltage output
- Metal plug
- Integrated amplifier
- Short-circuit protection



### Safety instructions

The Instruments are not to be used for safety applications, in particular applications in which safety of persons depends on proper operation of the instruments. These instruments shall exclusively be used by qualified personnel.



TECHNICAL INFORMATION (typ.)		+20°C, 24V DC
Operating principle		Inductive
Evaluation		analog
Size		8 x 8 x 50 mm (Dimensions)
Design		cuboid design
Mounting		quasi-flush
Characteristics		extremely high operating distance
Operating distance		0 ... 4 mm
Standardized measuring plate		12 x 12 x 1 mm
Service voltage		15 ... 30 V DC
No-load current		< 10 mA
Switching hysteresis		5 %
Analog output		0 ... 10 V
Shock-/vibration load		10 ... 55 Hz / 1,0 mm / 30 g
Switching frequency		1600 Hz
Reproducibility		± 0,01 mm (TA = constant) / 0,3 mm (23°C ± 5°C)
Ambient temperature, operation		-25 ... +70 °C
Insulation voltage endurance		500 V
Protection class		IP 67
Casing material		brass nickel plated
Connection		Connector, M8