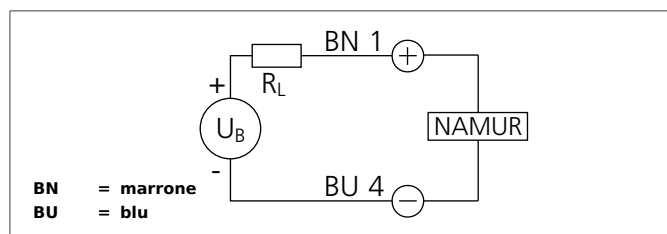
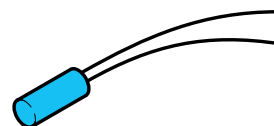


DCC 4.0 V 0.8 NAMUR-K Inductive Proximity Switch

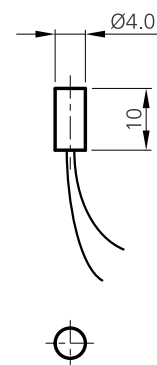
- Versions in accordance with NAMUR
- Service voltage 5 ... 30 V DC
- Output current < 1 mA with energized proximity switch
- Output current > 2,2 mA with de-energized proximity switch
- Cable, highly flexible
- Starting pulse suppression
- LED



Safety instructions

The Instruments are not to be used for safety applications, in particular applications in which safety of persons depends on proper operation of the instruments.

These instruments shall exclusively be used by qualified personnel.



| TECHNICAL INFORMATION (typ.) | +20°C, 24V DC |
|--------------------------------|------------------------------|
| Operating principle | Inductive |
| Evaluation | digital |
| Size | Ø 4,0 mm (Diameter) |
| Design | cylinder |
| Mounting | flush |
| Operating distance | 0,8 mm |
| Standardized measuring plate | 4 x 4 x 1 mm |
| Service voltage | 7,7 ... 9 V DC |
| Switching output | Namur, < 1 mA / > 2,2 mA |
| Shock/vibration load | 10 ... 55 Hz / 1,0 mm / 30 g |
| Switching frequency | 10000 Hz |
| Ambient temperature, operation | -25 ... +70 °C |
| Insulation voltage endurance | 500 V |
| Protection class | IP 67 |
| Casing material | stainless steel |
| Connection | Cable, 1,0 m |