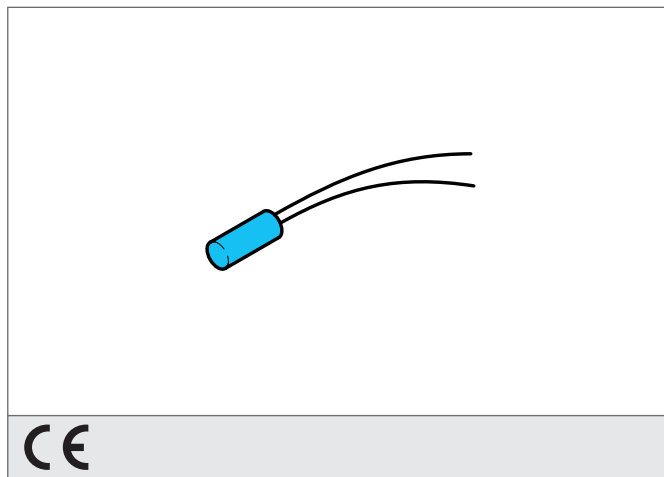


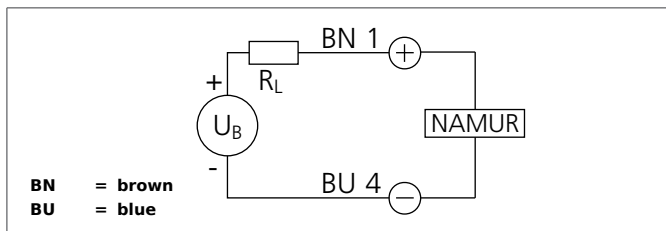
DCC 4.0 V 0.8 NAMUR-K

Inductive Proximity Switch

- Versions in accordance with NAMUR
- Service voltage 5 ... 30 V DC
- Output current < 1 mA with energized proximity switch
- Output current > 2,2 mA with de-energized proximity switch
- Cable, highly flexible
- Starting pulse suppression
- LED

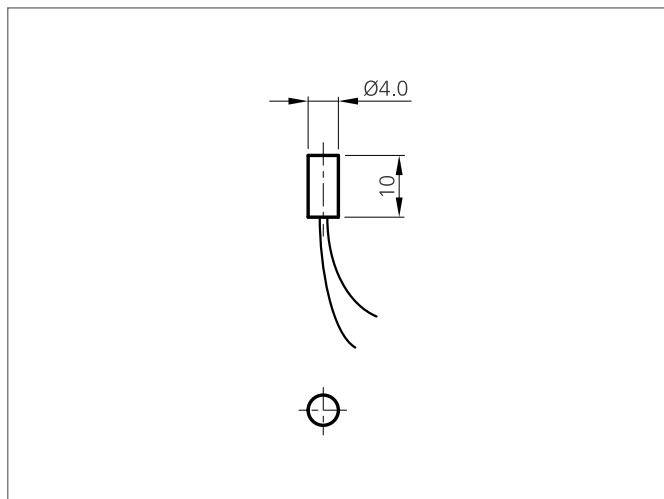


CE



Safety instructions

The Instruments are not to be used for safety applications, in particular applications in which safety of persons depends on proper operation of the instruments.
These instruments shall exclusively be used by qualified personnel.



TECHNICAL INFORMATION (typ.)		+20°C, 24V DC
Operating principle		Inductive
Evaluation		digital
Size		Ø 4,0 mm (Diameter)
Design		cylinder
Mounting		flush
Operating distance		0,8 mm
Standardized measuring plate		4 x 4 x 1 mm
Service voltage		7,7 ... 9 V DC
Switching output		Namur, < 1 mA / > 2,2 mA
Shock-/vibration load		10 ... 55 Hz / 1,0 mm / 30 g
Switching frequency		10000 Hz
Ambient temperature, operation		-25 ... +70 °C
Insulation voltage endurance		500 V
Protection class		IP 67
Casing material		stainless steel
Connection		Cable, 1,0 m