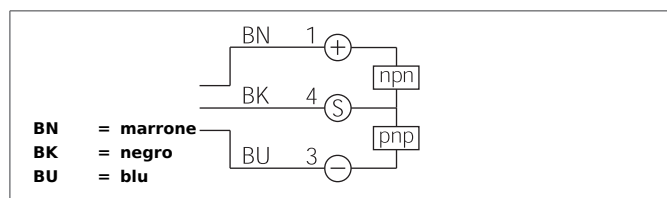
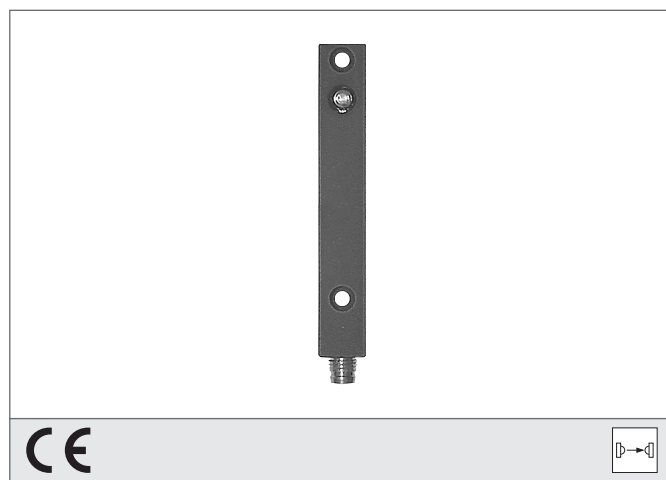


OEPQ 12 M 50000 G1-TSSL

High Performance Photoelectric Sensor, Receiver

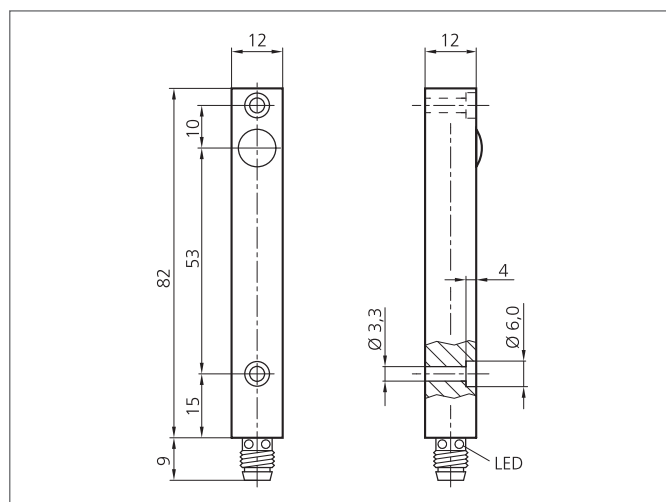
- High operating distance up to 50 m
- Integrated amplifier electronics
- Transistor output with push-pull
- High functional reserve
- Extremely dirt-resistant
- Easy adjustment
- Different designs to be combined
- High protection class
- Compact design



Safety instructions

The Instruments are not to be used for safety applications, in particular applications in which safety of persons depends on proper operation of the instruments.

These instruments shall exclusively be used by qualified personnel.



TECHNICAL INFORMATION (typ.)		+20°C, 24V DC
Operating principle	Through beam sensors, receiver, switching output	
Evaluation	digital	
Size	82 x 12 x 12 mm (Dimensions)	
Design	cuboid design	
Characteristics	High transmit power and dirt penetration	
Service voltage	10 ... 35 V DC	
No-load current	< 40 mA	
Operating distance	0 ... 50000 mm dependent on the transmitter	
Sensitivity adjustment	no setting elements	
Switching output	Push pull, 200 mA, NC	
Shock/vibration load	10 ... 55 Hz / 1,0 mm / 30 g	
Switching frequency	20 Hz	
Ambient temperature, operation	-20 ... +60 °C	
Ambient light immunity	15 kLx, Sunlight, 2 kLx, clocked light	
Protection class	IP 67	
Protection degree	III, operation on protective low voltage	
Casing material	Aluminium anodized	
Connection	Connector, M8, 3-poled	