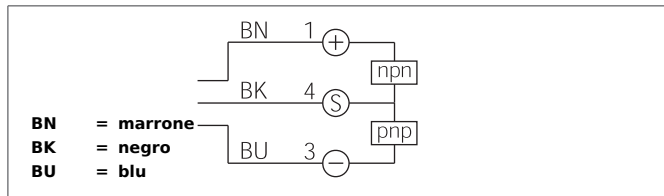


RS 40 M 6000 G3L-IBS

Radar Sensor

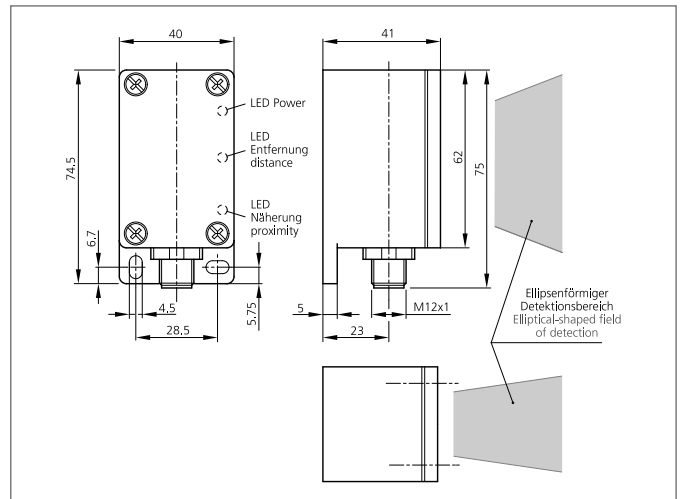
- Non-contact detection of approaching and departing elements up to 6 m
- Detection range and pulse stretching adjustable
- Mounting behind non-metallic materials possible
- Switching output for detection of approximation and distance
- Protection class IP 67 for outdoor use
- Robust metal casing



Safety instructions

The Instruments are not to be used for safety applications, in particular applications in which safety of persons depends on proper operation of the instruments.

These instruments shall exclusively be used by qualified personnel.



| TECHNICAL INFORMATION (typ.) | | +20°C, 24V DC |
|--------------------------------|--|--|
| Operating principle | | Radar |
| Characteristics | | 1 switching output for detection of approximation and distance |
| Service voltage | | 10 ... 35 V DC |
| No-load current | | < 35 mA |
| Working distance | | 500 ... 6000 mm |
| Switching output | | Push pull, 200 mA, NO/NC, switchable |
| Pulse stretching | | 0,1 ... 30 s adjustable |
| Voltage drop | | < 2,0 V |
| Switching frequency | | < 2 Hz |
| Working frequency | | 24,125 GHz, K-Band |
| Ambient temperature, operation | | -20 ... +60 °C |
| Insulation voltage endurance | | 500 V |
| Protection class | | IP 67 |
| Casing material | | Die-cast zinc black lacquered finish |
| Connection | | Connector, M12, 3-poled |