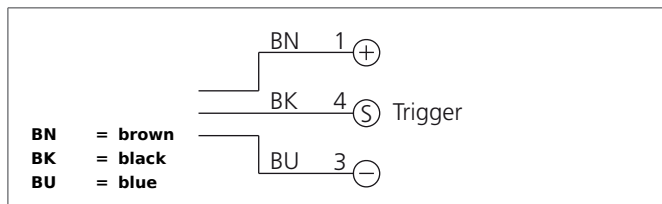
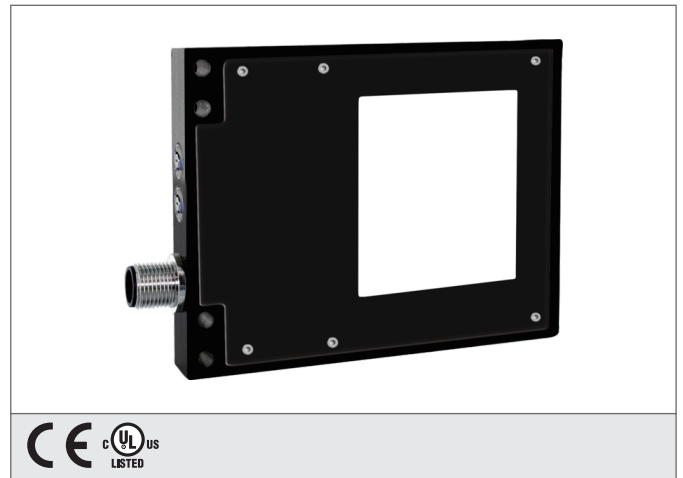
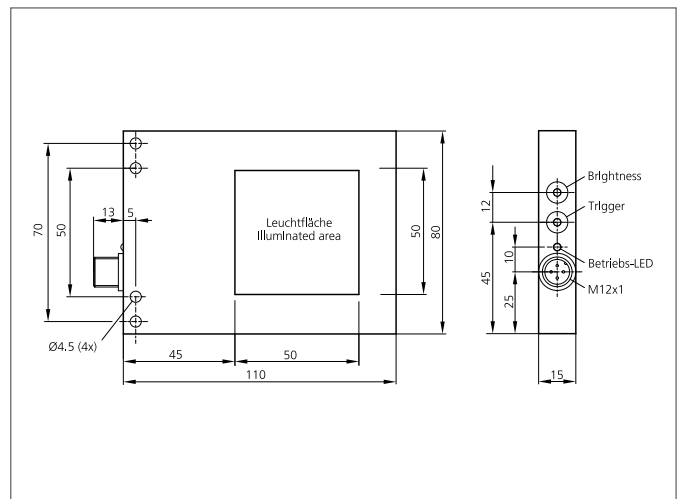


- 在整个电压范围内都能保持恒光强度水平
- 均匀的发光场
- 高效率
- 光密度可调



Safety instructions

The Instruments are not to be used for safety applications, in particular applications in which safety of persons depends on proper operation of the instruments.
 These instruments shall exclusively be used by qualified personnel.



TECHNICAL INFORMATION (typ.)		+20°C, 24V DC
设计		背景光源
照明区域		50 x 50 mm
特征		功率输出的内部控制, 触发输入
光的颜色		Infrared, 850 nm
工作电压		15 ... 35 V DC (Supply Class 2)
内部功耗		160 mA, (24 V DC)
输入低电平触发		0 < 2,8 V
输入高电平触发		> 3.3 35 V
功率		3,9 W (24 V DC)
负载振荡		10 ... 55 Hz / 1,0 mm / 30 g
极性接反保护		是
显示		LED灯: 绿色, 工作状态
环境温度		0 +50 °C
防护等级		IP 67
防护等级		III, 在保护性低电压下工作
危险类 (DIN EN62471标准)		Free group
外壳材料		Aluminium black anodized
材料		PC, opal diffus (保护光元件)
连接		Connector, M12, 3-poled
Connecting cable		VK ...