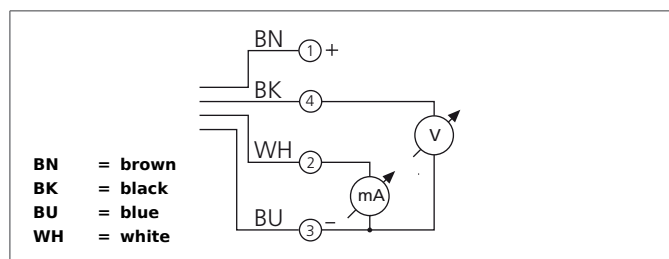
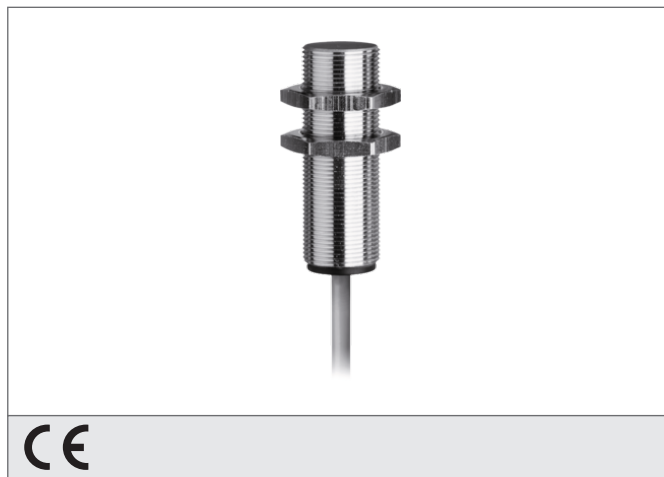


# DCC 18 M 10/10 AIK

## Inductive Proximity Switch

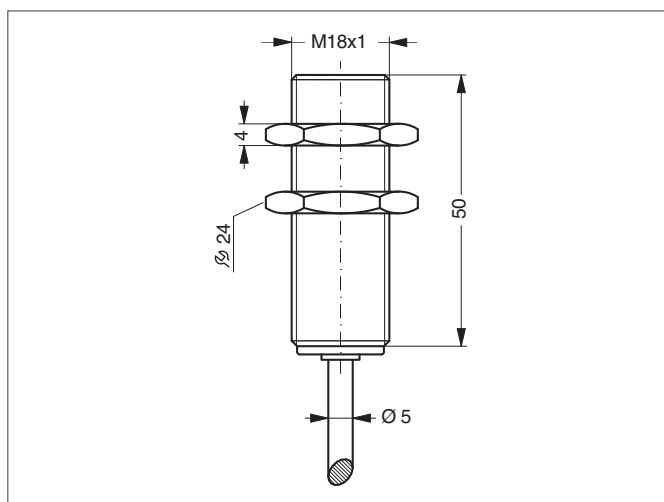
- Analog voltage output
- Analog current output
- Cable, highly flexible
- Integrated amplifier
- Short-circuit protection



### Safety instructions

The Instruments are not to be used for safety applications, in particular applications in which safety of persons depends on proper operation of the instruments.

These instruments shall exclusively be used by qualified personnel.



TECHNICAL INFORMATION (typ.)		+20°C, 24V DC
Operating principle		Inductive
Evaluation		analog
Size		M18 x 1 (thread)
Design		screw
Mounting		quasi-flush
Characteristics		extremely high operating distance
Operating distance		0 ... 10 mm
Standardized measuring plate		30 x 30 x 1 mm
Service voltage		15 ... 30 V DC
No-load current		< 12 mA
Analog output		0 ... 10 V, 4 ... 20 mA
Shock-/vibration load		10 ... 55 Hz / 1,0 mm / 30 g
Switching frequency		500 Hz
Reproducibility		± 0,02 mm (TA = constant) / 0,3 mm (23°C ± 5°C)
Ambient temperature, operation		-25 ... +70 °C
Insulation voltage endurance		500 V
Protection class		IP 67
Casing material		brass nickel plated
Material		PUR (Cable)
Connection		Cable, 2,0 m