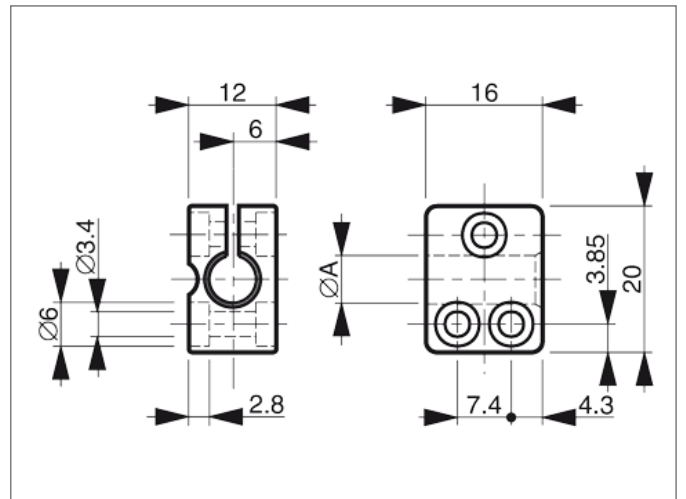


SH 4 Sensor Holder

- For cylindrical Sensors of \varnothing 4 mm or thread M4
- Simple installation
- Reduced mounting/downtimes thanks to one-piece construction
- Sensor exchange without changing the clamp position
- Oblong holes permit clamp adjustment



TECHNICAL INFORMATION (typ.)

Size	+20°C, 24V DC 12 x 16 x 20 mm (Dimensions) 4,0 mm (Clamping diameter A)
Characteristics	without limit stop
Casing material	plastics (polyamide - PA 6 GK)