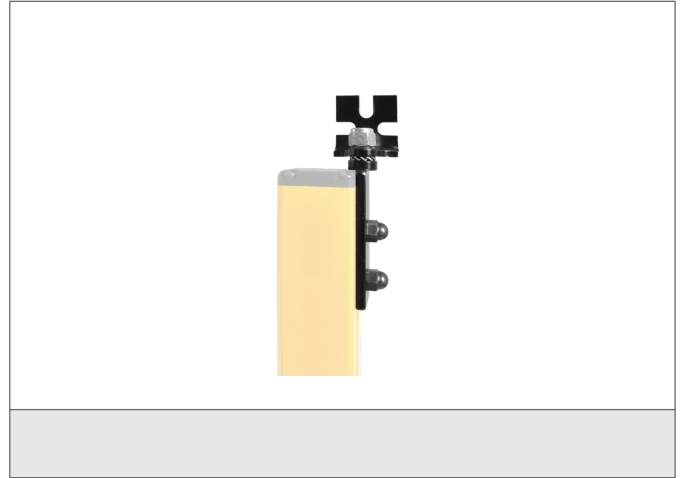


SFB E180

Adjustable fixing brackets

- 调节范围可达180°
- 结实耐用的设计
- 一套产品，包含发射器和接收器用的必要支架
- 推荐长距离检测使用和配反射镜使用

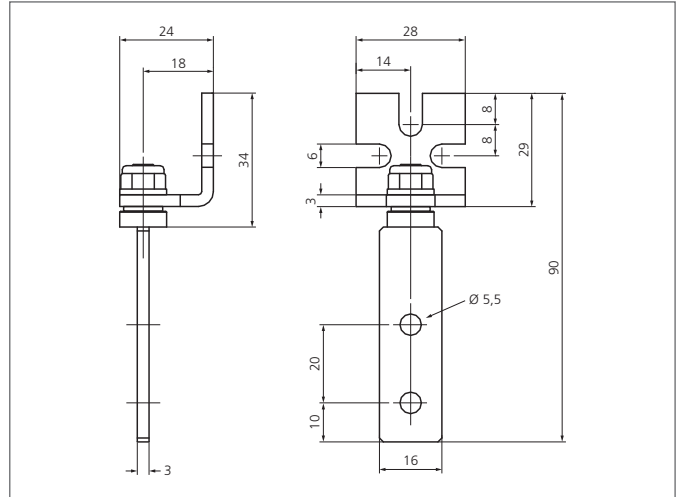


Safety instructions

All the installation, connection and safety regulations, as per our technical information, have to be strictly adhered to.

The set-up of the products have to be made by skilled staff, only.

Repair exclusively made by di-soric.



TECHNICAL INFORMATION (typ.)

操作原理

+20°C, 24V DC

可调支架

调整范围

180°

为了

all light curtains and light grids

材料

黑色阳极氧化钢 (安装支架)

交货范围

快速安装指南, 4个旋转支架, Fixing material