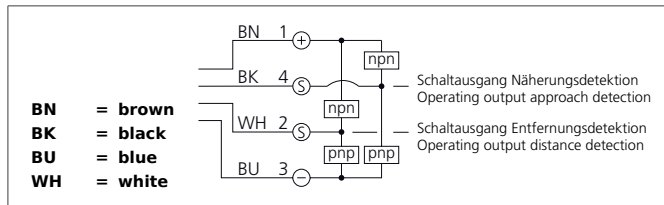


RS 40 M 6000 G8L-IBS Radar Sensor

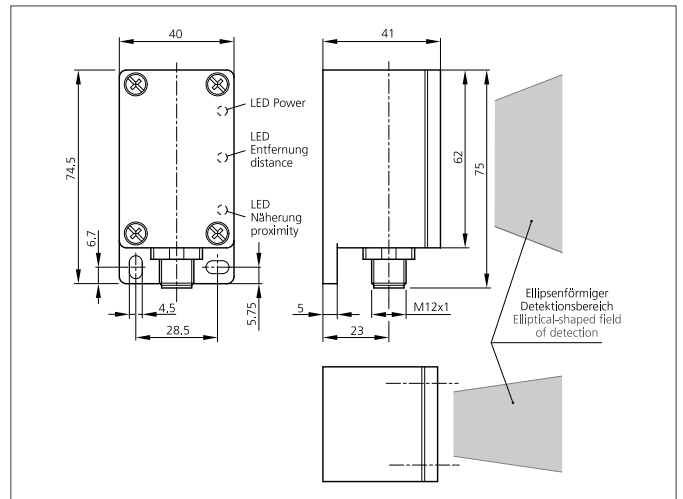


- Non-contact detection of approaching and departing elements up to 6 m
- Detection range and pulse stretching adjustable
- Mounting behind non-metallic materials possible
- Switching outputs for detection of approximation and distance
- Protection class IP 67 for outdoor use
- Robust metal casing



Safety instructions

The Instruments are not to be used for safety applications, in particular applications in which safety of persons depends on proper operation of the instruments.
 These instruments shall exclusively be used by qualified personnel.



TECHNICAL INFORMATION (typ.)		+20°C, 24V DC
Operating principle		Radar
Characteristics		2 directional switching outputs for detection of approximation and distance
Service voltage		10 ... 35 V DC
No-load current		< 35 mA
Working distance		500 ... 6000 mm
Switching output		Push pull (2x), 200 mA, NO/NC, switchable
Pulse stretching		0,1 ... 30 s adjustable
Voltage drop		< 2,0 V
Switching frequency		< 2 Hz
Working frequency		24,125 GHz, K-Band
Ambient temperature, operation		-20 ... +60 °C
Insulation voltage endurance		500 V
Protection class		IP 67
Casing material		Die-cast zinc black lacquered finish
Connection		Connector, M12, 4-poled