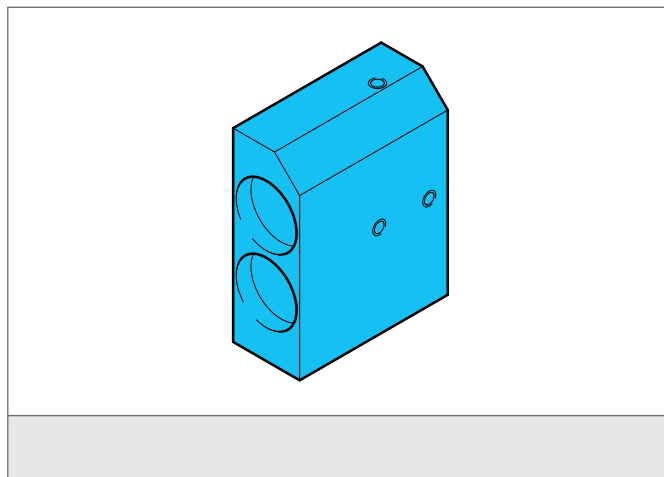


## Focus Optic

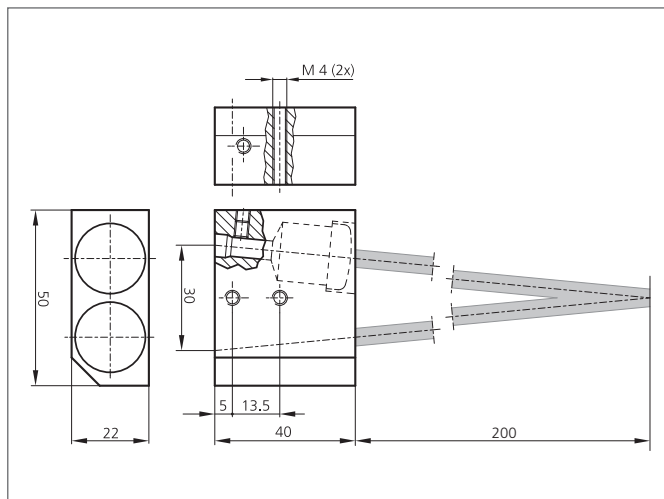
- Focusing of the light beam to just a small measuring spot diameter
- Enabling the colour measurement on smallest surfaces



## Safety instructions

The Instruments are not to be used for safety applications, in particular applications in which safety of persons depends on proper operation of the instruments.

These instruments shall exclusively be used by qualified personnel.



TECHNICAL INFORMATION (typ.)	+20°C, 24V DC
Light spot size	Ø 20 mm
Working distance	200 mm
Scanning range	150 ... 300 mm
Casing material	Aluminium anodized