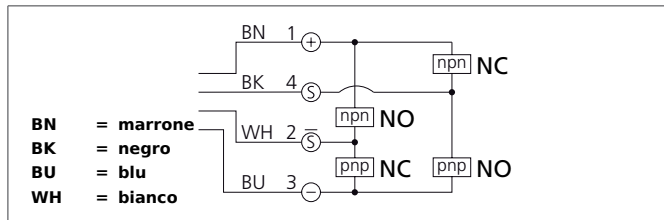


LHT 81 M 300 G4L-IBS

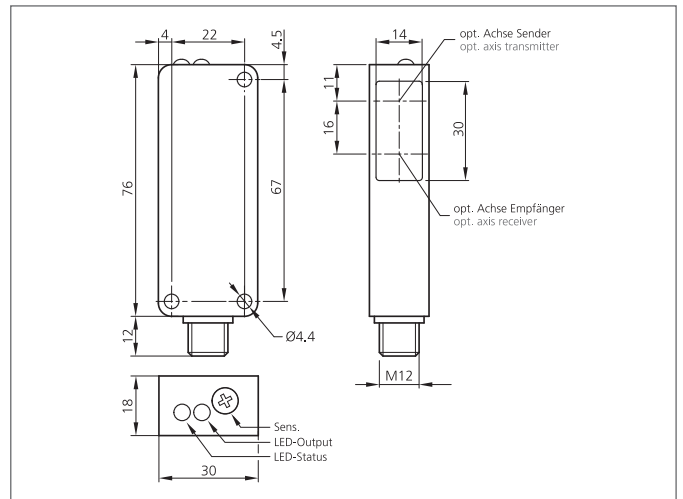
Laser Diffuse Sensor with Background Suppression

- Mechanical background suppression
- Vibration-save 6-turn adjustment for finest adjustment
- Red light laser, with small laser spot
- Push-pull pnp + npn
- High resolution, switching accuracy, switching frequency
- Functional reserve indicator
- Robust metal casing



Safety instructions

Inproper use may result in hazardous radiation exposure. Pay attention to accident prevention rules and laser class. The instruments are not to be used for safety applications, in particular applications in which safety of persons depends on proper operation of the instruments. These instruments shall exclusively be used by qualified personnel.



TECHNICAL INFORMATION (typ.)		+20°C, 24V DC
Operating principle		Diffuse reflective sensor
Evaluation		digital
Size		76 x 30 x 18 mm (Dimensions)
Design		cuboid design
Emitted light		Red light laser, 650 nm, clocked
Laser class		1 (IEC 60825-1)
Service voltage		10 ... 35 V DC
No-load current		< 30 mA
background suppression		yes
Operating distance		40 ... 300 mm (300 ... 600 mm as diffuse reflective sensor)
Sensitivity adjustment		6-turn adjustment
Switching output		Push pull, 200 mA, exclusive OR, NO/NC
Switching hysteresis		< 1 %
Shock-/vibration load		10 ... 55 Hz / 1,0 mm / 30 g
Switching frequency		1000 Hz
Ambient temperature, operation		-20 ... +60 °C
Ambient light immunity		5 kLx
Insulation voltage endurance		500 V
Protection class		IP 67
Protection degree		III, operation on protective low voltage
Casing material		Die-cast zinc black lacquered finish
Material		polycarbonate (Window)
Connection		Connector, M12, 4-poled

LHT 81 M 300 G4L-IBS

Laser Diffuse Sensor with Background Suppression

TECHNICAL INFORMATION (typ.)	+20°C, 24V DC
Connecting cable	VK ...