

LVX-ALX Evaluation Electronic

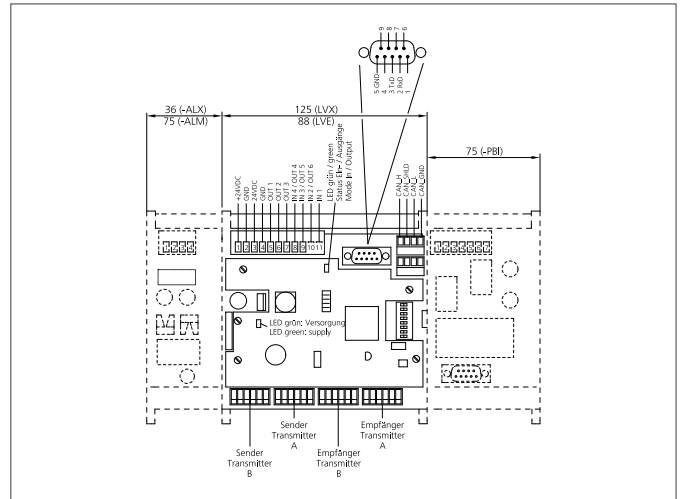
- Evaluation electronics for two light curtains LI ...
- Diagnosis LEDs
- Parameters for functions can be freely assigned
- DIN-rail mountable
- Interfaces: 1 input for which parameters can be set, 3 combined inputs/outputs, 3 outputs, RS232, CANopen



Safety instructions

The Instruments are not to be used for safety applications, in particular applications in which safety of persons depends on proper operation of the instruments.

These instruments shall exclusively be used by qualified personnel.



| TECHNICAL INFORMATION (typ.) | | +20°C, 24V DC |
|--|--|--|
| Size | | 161 x 126 x 60 mm (Dimensions) |
| Number of beams | | max. 500 evaluable |
| Number | | 2 (number of light curtains to be operated) |
| Number of inputs/outputs | | 3 |
| Output function | | parametrizable |
| Service voltage | | 20 ... 26 V DC |
| Operating distance | | 250 ... 6000 mm |
| Light beam evaluation | | Parameters can be assigned horizontally / diagonally |
| Cycle time per light beam | | 0,05 ms depending on configuration and range of the light bars |
| Switching output | | pnp, 24 V DC, 0,25 A (3x) |
| Analog output | | 0 ... 10 V, (2x) |
| Contact rating | | 250 mA |
| Interface | | Yes (CANopen) 3 (Combined IOs) |
| Inputs for which parameters can be set | | 24 V DC, 12 mA, 3000 Hz (1x) |
| Shock/vibration load | | 10 ... 55 Hz / 1,0 mm / 30 g |
| Display | | LED: error indicator |
| Ambient temperature, operation | | 0 ... +40 °C |
| Protection class | | IP 00 |
| Protection degree | | III, operation on protective low voltage |
| EMC directives | | EN 61000-6-3:2001 / EN 61000-6-1:2001 |
| Casing material | | plastics |