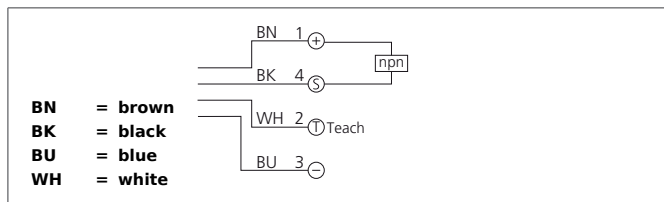
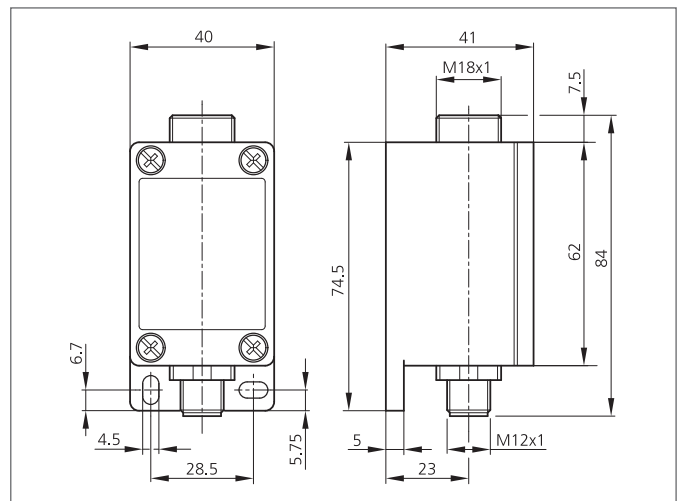


- 金属外壳
- 红光
- 时间按钮，远程示教输入
- 亮通/暗通



Safety instructions

The Instruments are not to be used for safety applications, in particular applications in which safety of persons depends on proper operation of the instruments.
 These instruments shall exclusively be used by qualified personnel.



TECHNICAL INFORMATION (typ.)		+20°C, 24V DC
放大器		Glass fiber optics M18
评估		数字的
发射光		红色光, 680 nm, 已调制
工作电压		10 ... 35 V DC
内部功耗		< 55 mA
控制按钮		3 (示教, 手动-, 手动+)
工作距离		60 mm
灵敏度调节		示教键
开关输出		npn, 200 mA, NO/NC, 可切换
开关滞后		< 12 %
负载振荡		10 ... 55 Hz / 1,0 mm / 30 g
显示		LED灯: 绿色, 工作状态, 黄色, 输出, 红色, 示教或者错误
工作频率		1500 Hz
重复定位精度		< 2 %
环境温度		-10 +60 ° C
温度漂移		0,3 %/K
环境光免疫		50 kLx
绝缘电压		500 V
防护等级		IP 65
外壳材料		Die-cast zinc lacquered finish
连接		Connector, M12, 4-poled