

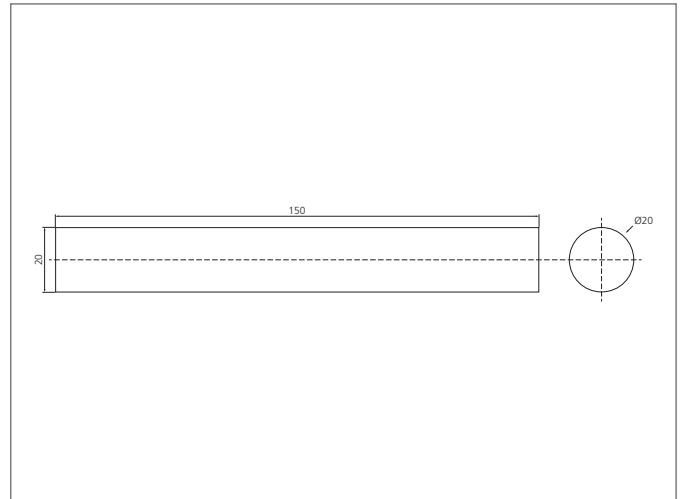
## TR 20 Test rod

- Reliable verification of the protected area
- Easy handling



### Safety instructions

All the installation, connection and safety regulations, as per our technical information, have to be strictly adhered to.  
The set-up of the products have to be made by skilled staff, only.  
Repair exclusively made by di-soric.



### TECHNICAL INFORMATION (typ.)

|                     |   |
|---------------------|---|
| Operating principle | Test rod                                    |
| Size                | 150 mm (Length/width)<br>Ø 20 mm (Diameter) |
| Suitable for        | Safety light curtains with 20 mm resolution |
| Material            | Aluminium, matte surface (Test rod)         |