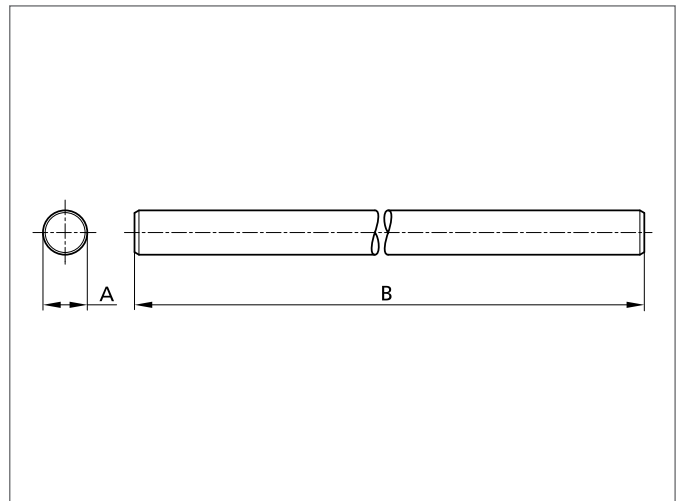
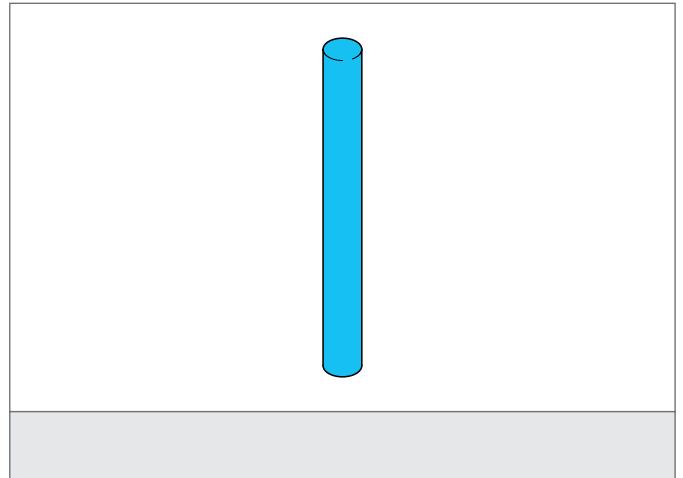


**HS-S-15-150-V**  
**Barre de montage**

- Highly flexible versatile mounting system
- Montage polyvalent
- Réglage lisse
- Conception robuste



**CARACTÉRISTIQUES TECHNIQUES (typ.)**

Dimensions	Ø 15 mm (Diameter assembly tap/drilling) 150 mm (B)
Matériau du boîtier	acier inoxydable
Product series	System holder HS