

LVX-ALX Evaluation Electronic

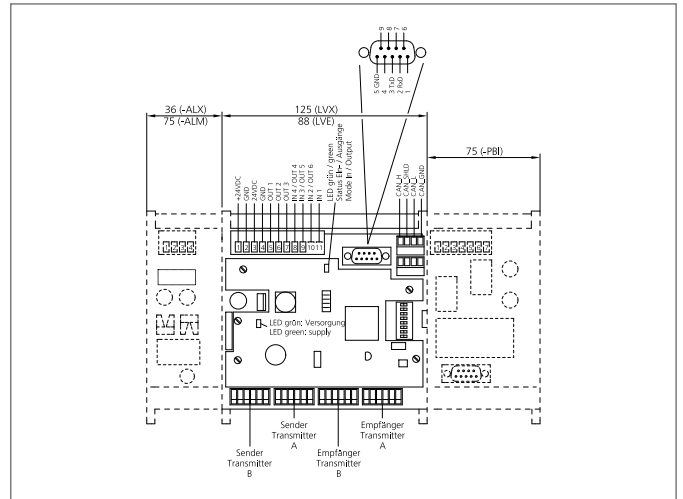
- Evaluation electronics for two light curtains LI ...
- Diagnosis LEDs
- Parameters for functions can be freely assigned
- DIN-rail mountable
- Interfaces: 1 input for which parameters can be set, 3 combined inputs/outputs, 3 outputs, RS232, CANopen



Safety instructions

The Instruments are not to be used for safety applications, in particular applications in which safety of persons depends on proper operation of the instruments.

These instruments shall exclusively be used by qualified personnel.



TECHNICAL INFORMATION (typ.)	+20°C, 24V DC
Size	161 x 126 x 60 mm (Dimensions)
Number of beams	max. 500 evaluable
Number	2 (number of light curtains to be operated)
Number of inputs/outputs	3
Output function	parametrizable
Service voltage	20 ... 26 V DC
Operating distance	250 ... 6000 mm
Light beam evaluation	Parameters can be assigned horizontally / diagonally
Cycle time per light beam	0,05 ms depending on configuration and range of the light bars
Switching output	pnp, 24 V DC, 0,25 A (3x)
Analog output	0 ... 10 V, (2x)
Contact rating	250 mA
Interface	Yes (CANopen) 3 (Combined IOs)
Inputs for which parameters can be set	24 V DC, 12 mA, 3000 Hz (1x)
Shock-/vibration load	10 ... 55 Hz / 1,0 mm / 30 g
Display	LED: error indicator
Ambient temperature, operation	0 ... +40 °C
Protection class	IP 00
Protection degree	III, operation on protective low voltage
EMC directives	EN 61000-6-3:2001 / EN 61000-6-1:2001
Casing material	plastics