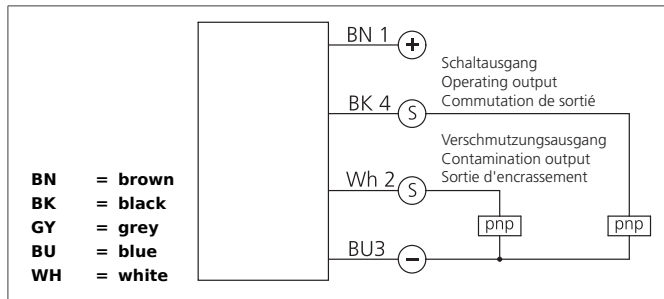
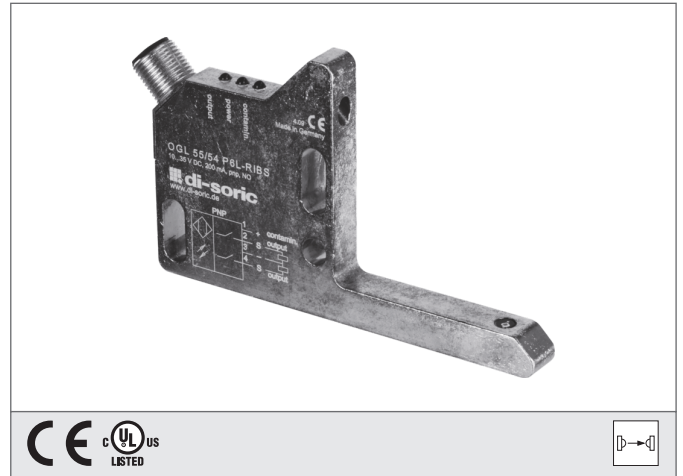


OGL 55/54 P6L-RIBS

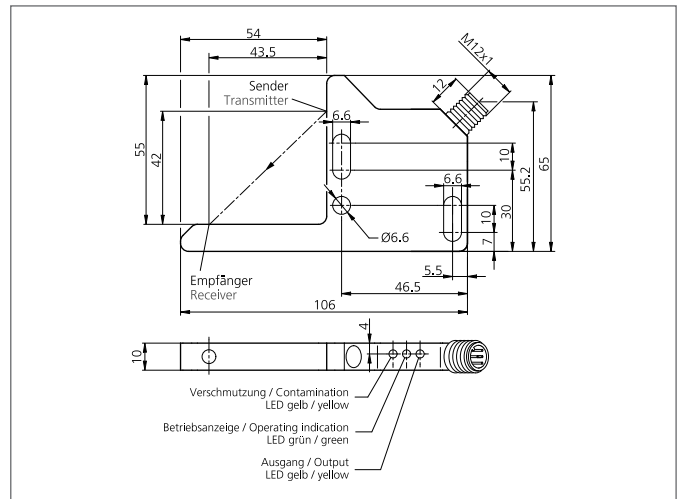
High Performance Angled Light Barrier

- Intelligent contamination output with LED
- High functional reserve
- Extremely dirt-resistant
- Advanced PE-contact
- Optical axis approachable in x-, y- and z-direction
- All-purpose mounting
- Robust metal casing



Safety instructions

The Instruments are not to be used for safety applications, in particular applications in which safety of persons depends on proper operation of the instruments.
 These instruments shall exclusively be used by qualified personnel.



| TECHNICAL INFORMATION (typ.) | +20°C, 24V DC |
|--------------------------------|--|
| Operating principle | Optical |
| Evaluation | digital |
| Size | 65 x 106 x 10 mm (Dimensions) |
| Design | Angle |
| Branch length inside | 55/54 mm |
| Characteristics | High transmit power and dirt penetration |
| Emitted light | Red, 660 nm, clocked |
| Service voltage | 10 ... 35 V DC (Supply Class 2) |
| No-load current | < 45 mA |
| Operating distance | 60 mm (optical axis) |
| Sensitivity adjustment | no setting elements |
| Switching output | pnp, 200 mA, NO |
| Contamination output | pnp, 200 mA |
| Shock-/vibration load | 10 ... 55 Hz / 1,0 mm / 30 g |
| Voltage drop | < 2,0 V |
| Switching frequency | 200 Hz |
| Ambient temperature, operation | -10 ... +60 °C |
| Ambient light immunity | 5 kLx |
| Insulation voltage endurance | 500 V |
| Protection class | IP 67 |
| Protection degree | III, operation on protective low voltage |
| Casing material | Die-cast zinc |
| Connection | Connector, M12, 4-poled |

OGL 55/54 P6L-RIBS
High Performance Angled Light Barrier



TECHNICAL INFORMATION (typ.)

Connecting cable

+20°C, 24V DC

VK ...