

LVX-ALX Evaluation Electronic

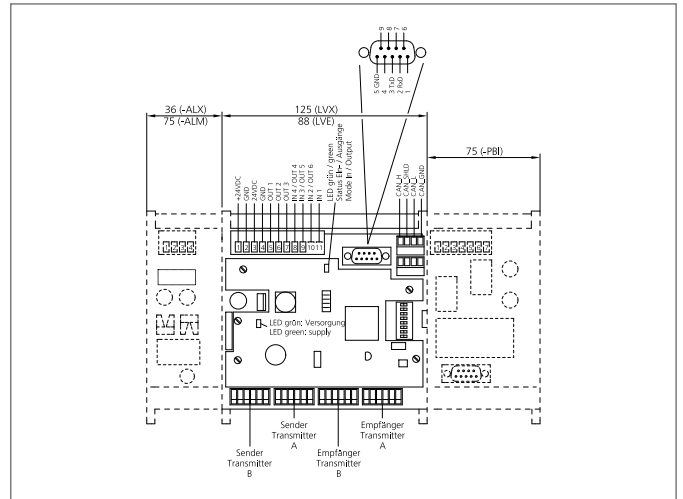
- Evaluation electronics for two light curtains LI ...
- Diagnosis LEDs
- Parameters for functions can be freely assigned
- DIN-rail mountable
- Interfaces: 1 input for which parameters can be set, 3 combined inputs/outputs, 3 outputs, RS232, CANopen



Safety instructions

The Instruments are not to be used for safety applications, in particular applications in which safety of persons depends on proper operation of the instruments.

These instruments shall exclusively be used by qualified personnel.



TECHNICAL INFORMATION (typ.)		+20°C, 24V DC
Size		161 x 126 x 60 mm (Dimensions)
Number of beams		max. 500 evaluable
Number		2 (number of light curtains to be operated)
Number of inputs/outputs		3
Output function		parametrizable
Service voltage		20 ... 26 V DC
Operating distance		250 ... 6000 mm
Light beam evaluation		Parameters can be assigned horizontally / diagonally
Cycle time per light beam		0,05 ms depending on configuration and range of the light bars
Switching output		pnp, 24 V DC, 0,25 A (3x)
Analog output		0 ... 10 V, (2x)
Contact rating		250 mA
Interface		Yes (CANopen) 3 (Combined IOs)
Inputs for which parameters can be set		24 V DC, 12 mA, 3000 Hz (1x)
Shock-/vibration load		10 ... 55 Hz / 1,0 mm / 30 g
Display		LED: error indicator
Ambient temperature, operation		0 ... +40 °C
Protection class		IP 00
Protection degree		III, operation on protective low voltage
EMC directives		EN 61000-6-3:2001 / EN 61000-6-1:2001
Casing material		plastics