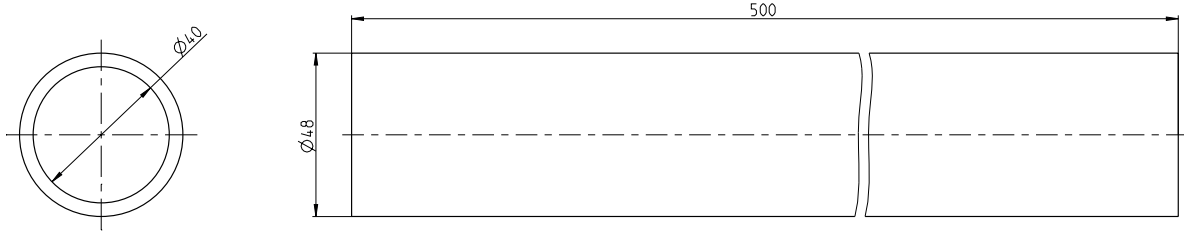


Type Support tubes Article number 9521245000



Component pictograms



Property chart

Specification	Value	According to standard	Remark
General data:			
Dimensions (mm)	ø 48 x 500 mm		
Weight	~ 2,17 kg		
Rated voltage	Max. 400 V (AC) Max. 48 V (DC)		
Temperature range	-5°C bis +70°C		
Largest gland cross-section	ø40 mm		Details see drawing
Material	E235 + C	EN 10305-2	Inner joint leveled
Surface:	Galvanized, (blue passivated)		