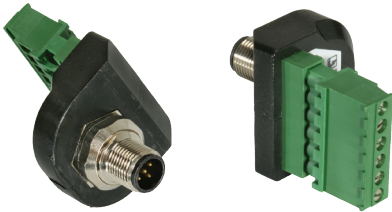


M12-Receptacle Connectors In Accordance With IEC 61076-2-101

RSF 5 TB | RKF 5 TB

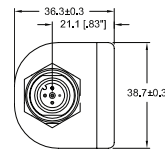


Male, 5-Pole to Terminal Block

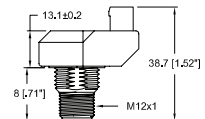
Receptacle, 5-pole, male to terminal block receptacle.

– especially suitable for panel-mount/ feedthrough applications –

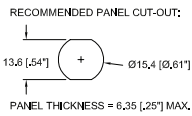
RSF 5 TB



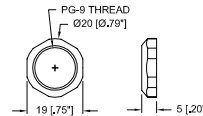
Front View



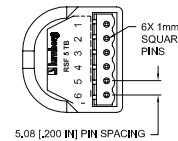
Side View



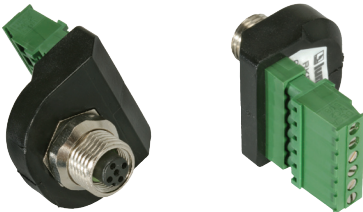
Recommended Panel Cut-Out



Panel Nut Dimensions



Rear View

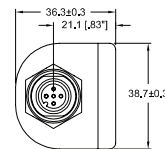


Female, 5-Pole to Terminal Block

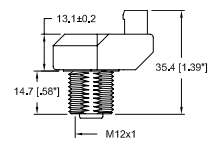
Receptacle, 5-pole, female to terminal block receptacle.

– especially suitable for panel-mount/ feedthrough applications –

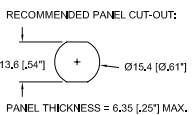
RKF 5 TB



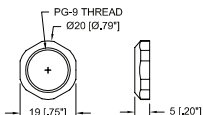
Front View



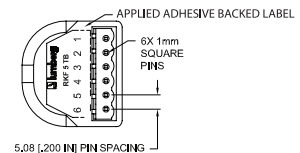
Side View



Recommended Panel Cut-Out



Panel Nut Dimensions

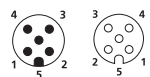


Rear View

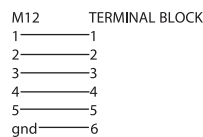
Pin Assignments

Face Views / M12

Male / Female



Wiring Diagram





Be Certain with Belden

M12-Receptacle Connectors In Accordance With IEC 61076-2-101
 RSF 5 TB | RKF 5 TB

Technical Data

Environmental

Degree of protection IP 67 / NEMA 6P
 Operating temperature range -25°C (-13°F) / +90°C (+194°F)


Mechanical

M12 Connector
 Shell CuZn, nickel plated
 Panel Nut CuZn, nickel plated
 Contacts CuZn, gold plated
 Insert Polyurethane, black
 Sealing Viton
 Terminal Block Receptacle
 Header Body Polyamide 66, green
 Pins CuZn, tin plated
 Overmold Polyamide, black

Electrical

Current rating 4 A
 Voltage rating 250 V

Recommended Mating Terminal Block
 (Lumberg Part Numbers)
 MC 200-508-06 90° wire exit (included))

Part Number	Pins	Characteristics
RSF 5 TB RKF 5 TB	5	

Receptacles