

**M12-Receptacle Connectors In Accordance With IEC 61076-2-101**

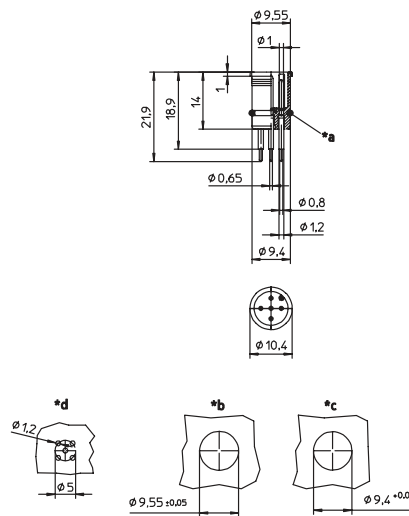
**RSEL | RSELP**



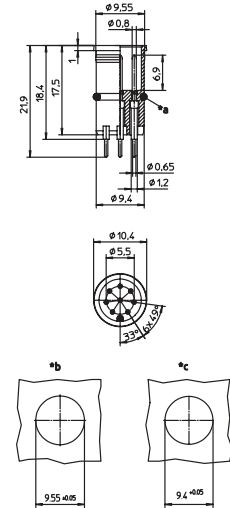
**Male, 4-, 5-, and 8-Pole**

Receptacle connector, M12 male connector for sensors, solder contacts for printed circuit board mounting.

**RSEL**



**RSEL 8 POLE**



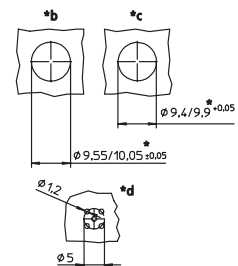
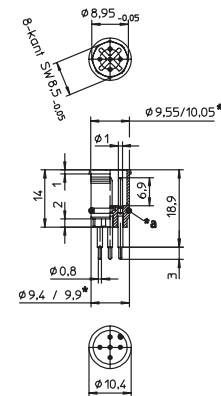
- \*a O-ring enclosed separately
- \*b ventilation hole
- \*c cut out with O-ring
- \*d cut out without O-ring



**Male, 4- and 8-Pole**

Receptacle connector, M12 male connector for sensors, with octagonal shape as antirotation protection, solder contacts for printed circuit board mounting.

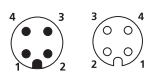
**RSELP**



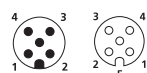
**Pin Assignments**

**Face Views / M12, Male / Female**

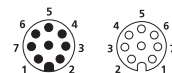
**4 pole**



**5 pole**



**8 pole**





Be Certain with Belden

**M12-Receptacle Connectors In Accordance With IEC 61076-2-101**  
RSEL | RSELP

**Technical Data**

**Environmental**

Degree of protection IP 67 / NEMA 6P  
Operating temperature range -25°C (-13°F) / +80°C (+194°F)

**Mechanical**

Insert PA  
Contact CuZn, pre-nickel and 0.8 microns gold-plated  
O-ring FKM  
Mode of connection printed circuit board mount

**Electrical**

Contact resistance ≤ 5 mΩ  
Nominal current at 40°C 4–5 poles 4 A  
8 poles 2 A  
Nominal voltage 4 poles 240 V  
5 poles 60 V  
8 poles 30 V  
encapsulated  
Rated voltage 4 poles 250 V  
5 poles 63 V  
8 poles 36 V  
Test voltage 4 poles 2.0 kV eff. / 60 s  
5–8 poles 1.5 kV eff. / 60 s  
Insulation resistance > 10<sup>9</sup> Ω  
Pollution degree 3

Part Number	Pins	Characteristics
RSEL 4 RSELP 4	4	 
RSEL 5 RSELP 5	5	 
RSEL 8	8	 

Receptacles