

## M12-Receptacle Connectors In Accordance With IEC 61076-2-101

### PRSFM/0.5 M | PRKFM/0.5 M

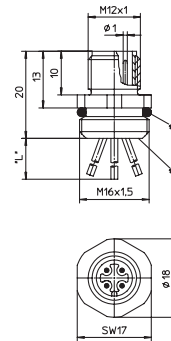


#### Male, 4-, 5- and 8-Pole

M12 Receptacle connector, M12 male connector for front mounting, housing of stainless steel, assembled stranded wire, solder contacts potted with epoxy, chassis side thread M16 x 1.5 (panel nut RSKFM 16)

– especially designed for use in food processing equipment –

#### PRSFM/0.5 M



\*a O-ring enclosed separately  
\*b solder contacts potted with epoxy  
\*L=0.5 m

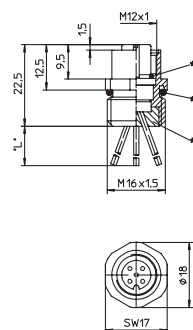


#### Female, 4-, 5- and 8-Pole

M12 Receptacle connector, M12 female connector for front mounting, housing of stainless steel, assembled stranded wire, solder contacts potted with epoxy, chassis side thread M16 x 1.5 (panel nut RSKFM 16)

– especially designed for use in food processing equipment –

#### PRKFM/0.5 M

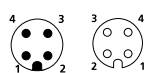


\*a O-Ring  
\*b O-ring enclosed separately  
\*c solder contacts potted with epoxy  
\*L=0.5 m

### Pin Assignments

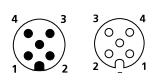
#### Face Views / M12, Male / Female

##### 4 pole



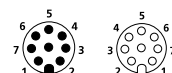
1 = brown  
2 = white  
3 = blue  
4 = black

##### 5 pole



1 = brown  
2 = white  
3 = blue  
4 = black  
5 = green/yellow

##### 8 pole



1 = white  
2 = brown  
3 = green  
4 = yellow  
5 = grey  
6 = pink  
7 = blue  
8 = red



Be Certain with Belden

## M12-Receptacle Connectors In Accordance With IEC 61076-2-101

PRSFM/0.5 M | PRKFM/0.5 M

### Technical Data

#### Environmental





Degree of protection IP 67 / NEMA 6P  
Operating temperature range -25°C (-13°F) / +70°C (+158°F)

#### Mechanical

Housing / Molded body stainless steel  
Insert PBT  
Contact CuZn, pre-nickel and 0.8 microns gold-plated  
O-ring EPDM

#### Electrical

Contact resistance  $\leq 5 \text{ m}\Omega$   
Nominal current at 40°C  
4–5 poles 4 A  
8 poles 2 A  
Nominal voltage  
4 poles 240 V  
5 poles 60 V  
8 poles 30 V  
Rated voltage  
4 poles 250 V  
5 poles 63 V  
8 poles 36 V  
Test voltage  
4 poles 2.0 kV eff. / 60 s  
5–8 poles 1.5 kV eff. / 60 s  
Insulation resistance  $> 10^9 \Omega$   
Pollution degree 3

Part Number		Pins	Lead (mm <sup>2</sup> )	Characteristics
PRSFM 4/0,5 M	PRKFM 4/0,5 M	4	0.34 (22 AWG)	 
PRSFM 5/0,5 M	PRKFM 5/0,5 M	5	1 x 0.5 / 4 x AWG 22	 
PRSFM 8/0,5 M	PRKFM 8/0,5 M	8	0.22 (24 AWG)	